

Districtwide Rezoning Board Workshop

April 6, 2023

Proposed Meeting Schedule for Districtwide Rezoning

April 6, 1 pm: School Board Workshop

***April 19, 5:30 pm: Community Input Session–Oak View Middle**

***April 25, 5:30 pm: Community Input Session–Wiles Elementary**

***April 27, 5:30 pm: Community Input Session–Metcalf Elementary**

***The purpose of these meetings is to share current enrollment, capacity and other information with the community and receive input on comprehensive rezoning BEFORE proposed attendance zone revisions, including maps, are developed.**

Proposed Meeting Schedule for Comprehensive Rezoning

August 16, 4 pm: School Board Workshop (including presentation of proposed revisions to attendance zones)

August 16–October 17 (Dates/times/locations TBD): Community Input Sessions to share proposed zones and receive input

September 19, 6 pm: Regular Board meeting (including 1st reading of proposed zones)

October 17, 4 pm: Public Hearing on proposed zones (ahead of regular 6pm Board meeting)

November 7, 6 pm: Regular Board meeting, (including 2nd reading/vote on revised attendance zones; must be held no less than 14 days from public hearing)

December 18: 90-day time frame to adopt runs out

Enrollment Table (03.10.2023): Elementary

SCHOOL	TOTAL ALL	CAP	% ENRL
ELEMENTARY SCHOOLS			
EARLY LEARNING ACADEMY AT DUVAL	0	408	
PARKER, C. B. ELEMENTARY	520	489	106
FOSTER, STEPHEN ELEMENTARY	457	467	98
LAKE FOREST ELEMENTARY	334	598	56
LITTLEWOOD ELEMENTARY	724	588	123
METCALFE, W.A. ELEMENTARY	467	624	75
WILLIAMS, JOSEPH ELEMENTARY	479	590	81
ALACHUA ELEMENTARY	326	525	62
ARCHER ELEMENTARY SCHOOL	457	489	93
SHELL, CHESTER ELEMENTARY	349	366	95
TERWILLIGER, MYRA ELEMENTARY	618	962	64
OLD TERWILLIGER, MYRA ELEMENTARY	0	575	
IDYLWILD ELEMENTARY	514	662	78
GLEN SPRINGS ELEMENTARY	431	463	93
RAWLINGS, MARJORIE K. ELEMENTARY	427	427	100
HIGH SPRINGS COMMUNITY SCHOOL	987	1009	98
HIDDEN OAK ELEMENTARY	790	744	106
WILES, KIMBALL ELEMENTARY	872	725	120
CHILES, LAWTON M. ELEMENTARY	748	727	103
MEADOWBROOK ELEMENTARY SCHOOL	874	758	115
NEWBERRY ELEMENTARY	665	471	141
NORTON, C.W. ELEMENTARY	595	669	89
PRAIRIE VIEW ELEMENTARY	0	597	
TALBOT, WILLIAM S. ELEMENTARY	658	726	91
IRBY, W.W. ELEMENTARY	381	536	71
ELEMENTARY SCHOOL TOTALS	12,673	15,195	2,522

Enrollment Table (03.10.2023): Middle & High

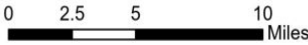
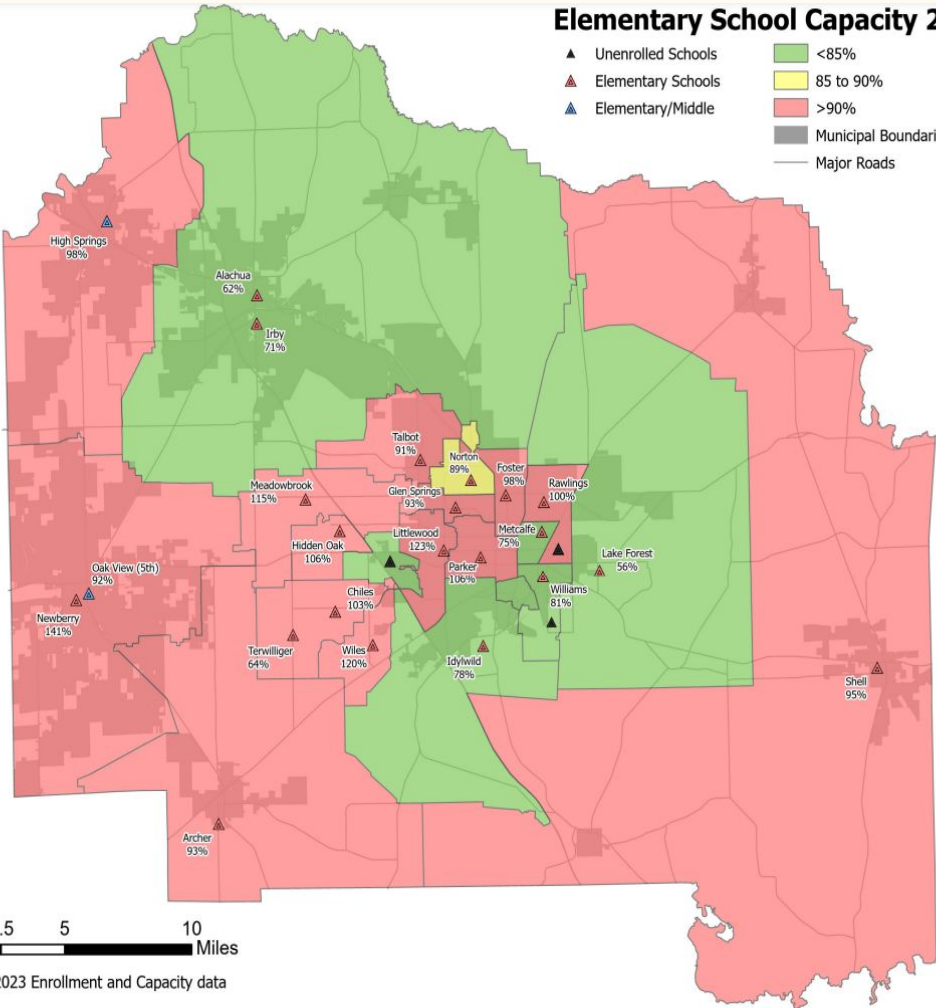
MIDDLE SCHOOLS			
LINCOLN, ABRAHAM MIDDLE SCHOOL	722	1053	69
BISHOP, HOWARD W. MIDDLE SCHOO	837	1075	78
WESTWOOD MIDDLE SCHOOL	844	1112	76
HAWTHORNE HIGH SCHOOL	194	660	29
MEBANE, A.L. MIDDLE SCHOOL	336	788	43
FORT CLARKE MIDDLE SCHOOL	955	871	110
KANAPAHA MIDDLE SCHOOL	1,105	1166	95
OAK VIEW MIDDLE SCHOOL	974	1063	92
MIDDLE SCHOOL TOTALS	5,967	7,788	1,821
HIGH SCHOOLS			
GAINESVILLE HIGH SCHOOL	1,804	1926	94
HAWTHORNE HIGH SCHOOL	263	660	40
NEWBERRY HIGH SCHOOL	707	671	105
SANTA FE HIGH SCHOOL	1,141	1291	88
LOFTEN, W.T. HIGH SCHOOL	268	508	53
EASTSIDE HIGH SCHOOL	1,208	1952	62
BUCHHOLZ, F. W. HIGH SCHOOL	2,489	2006	124
HIGH SCHOOL TOTALS	7,880	9,014	1,134

Enrollment Maps: Elementary



Elementary School Capacity 2023

- ▲ Unenrolled Schools
- ▲ Elementary Schools
- ▲ Elementary/Middle
- <85%
- 85 to 90%
- >90%
- ▬ Municipal Boundaries
- ▬ Major Roads



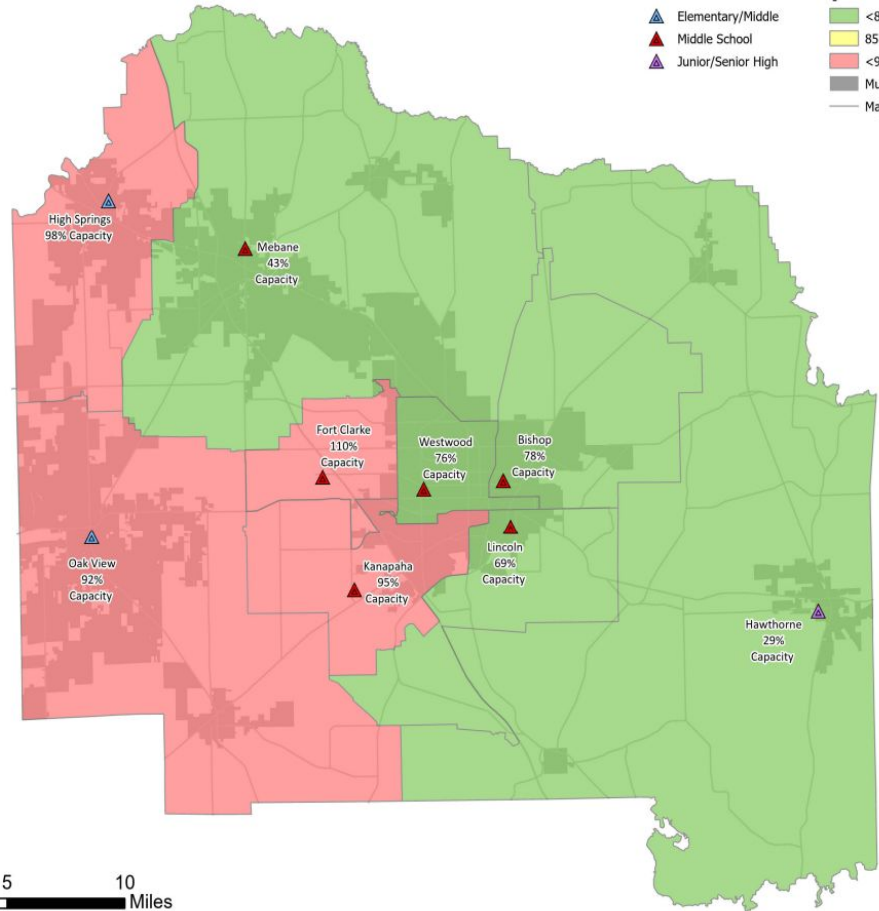
March 10, 2023 Enrollment and Capacity data

Enrollment Maps: Middle



Middle School Capacity 2023

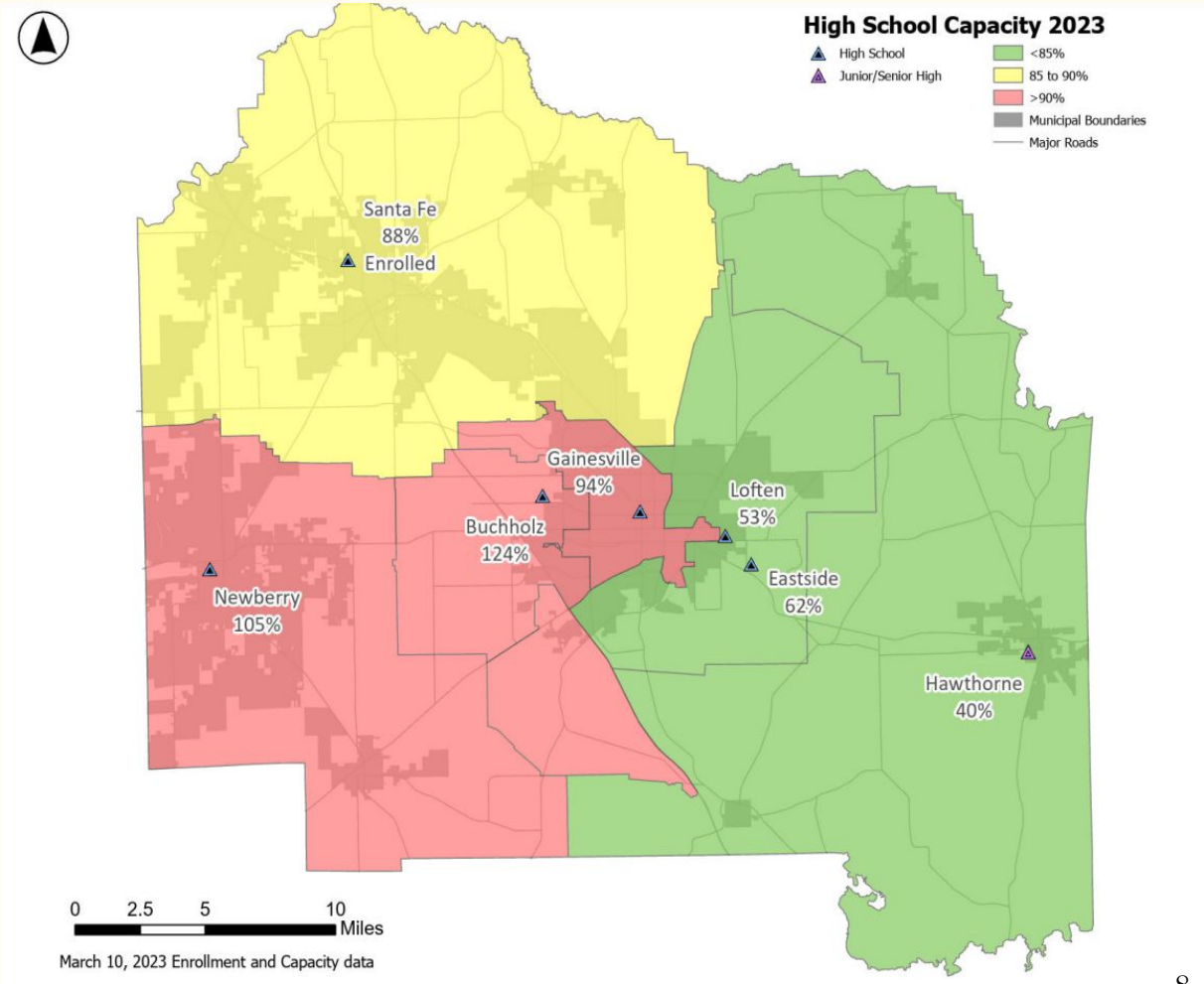
- ▲ Elementary/Middle
- ▲ Middle School
- ▲ Junior/Senior High
- <85%
- 85 to 90%
- <90%
- Municipal Boundaries
- Major Roads



0 2.5 5 10 Miles

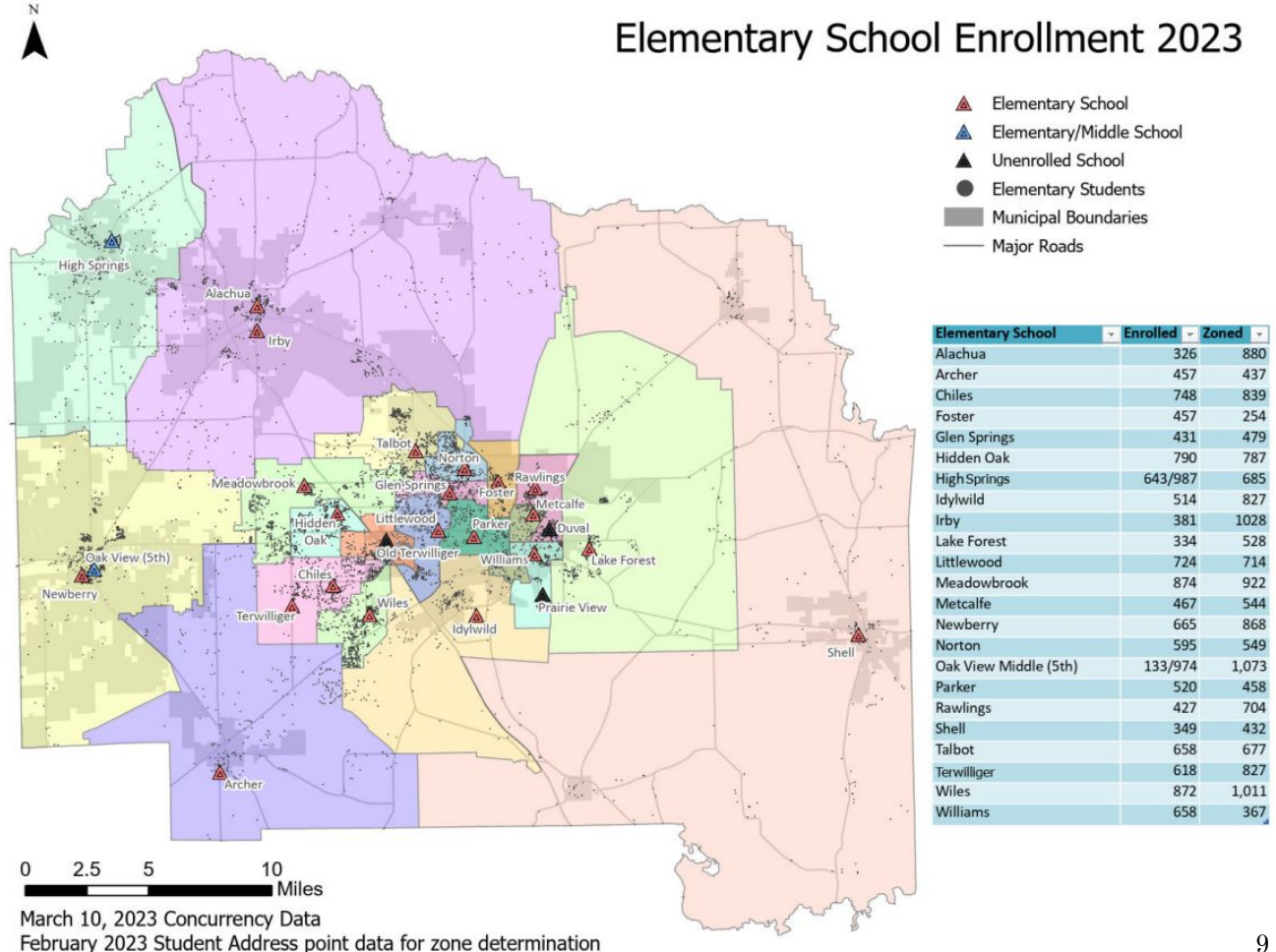
March 10, 2023 Enrollment and Capacity data

Enrollment Maps: High

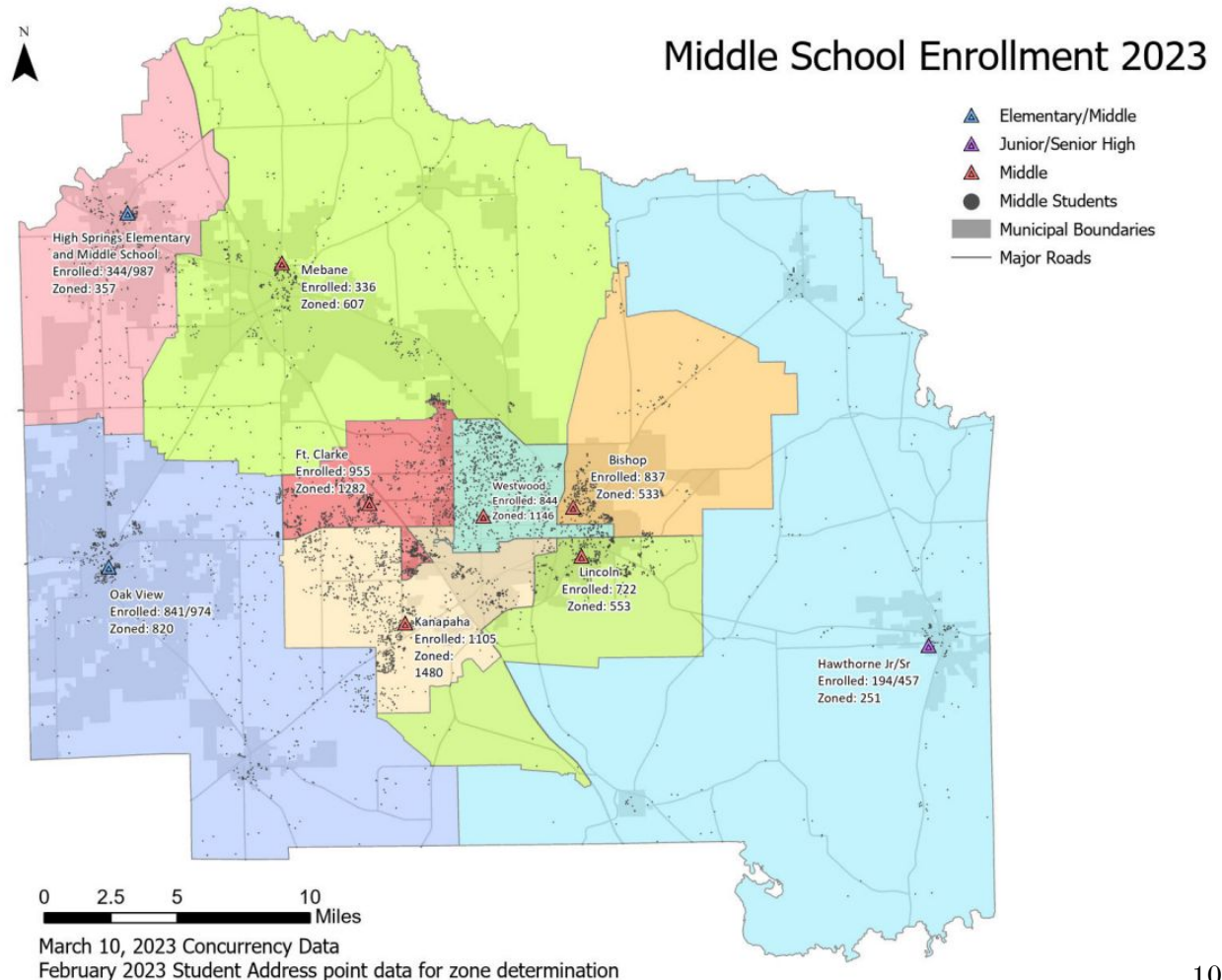


Student Population Maps: Elementary

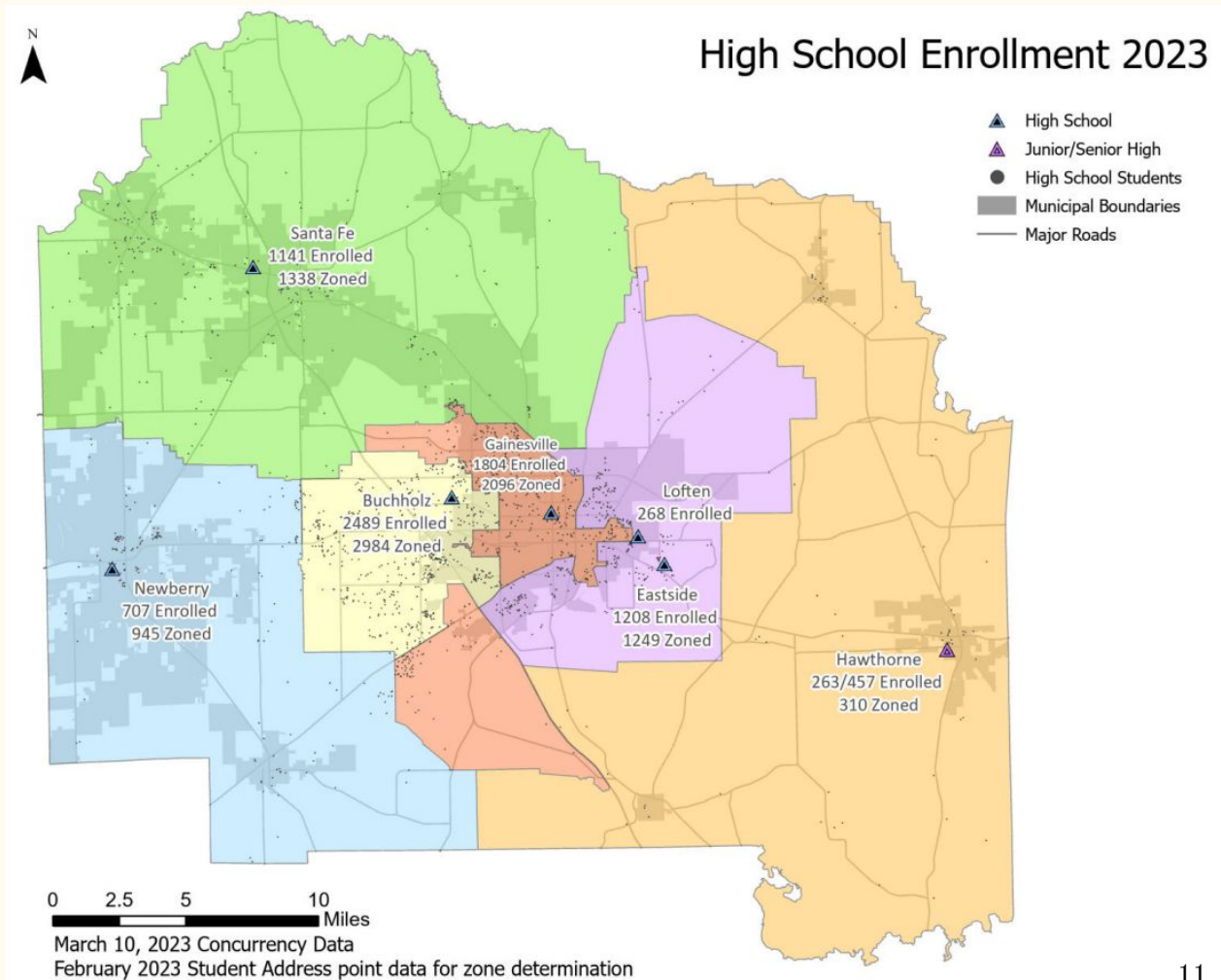
Elementary School Enrollment 2023



Student Population Maps: Middle

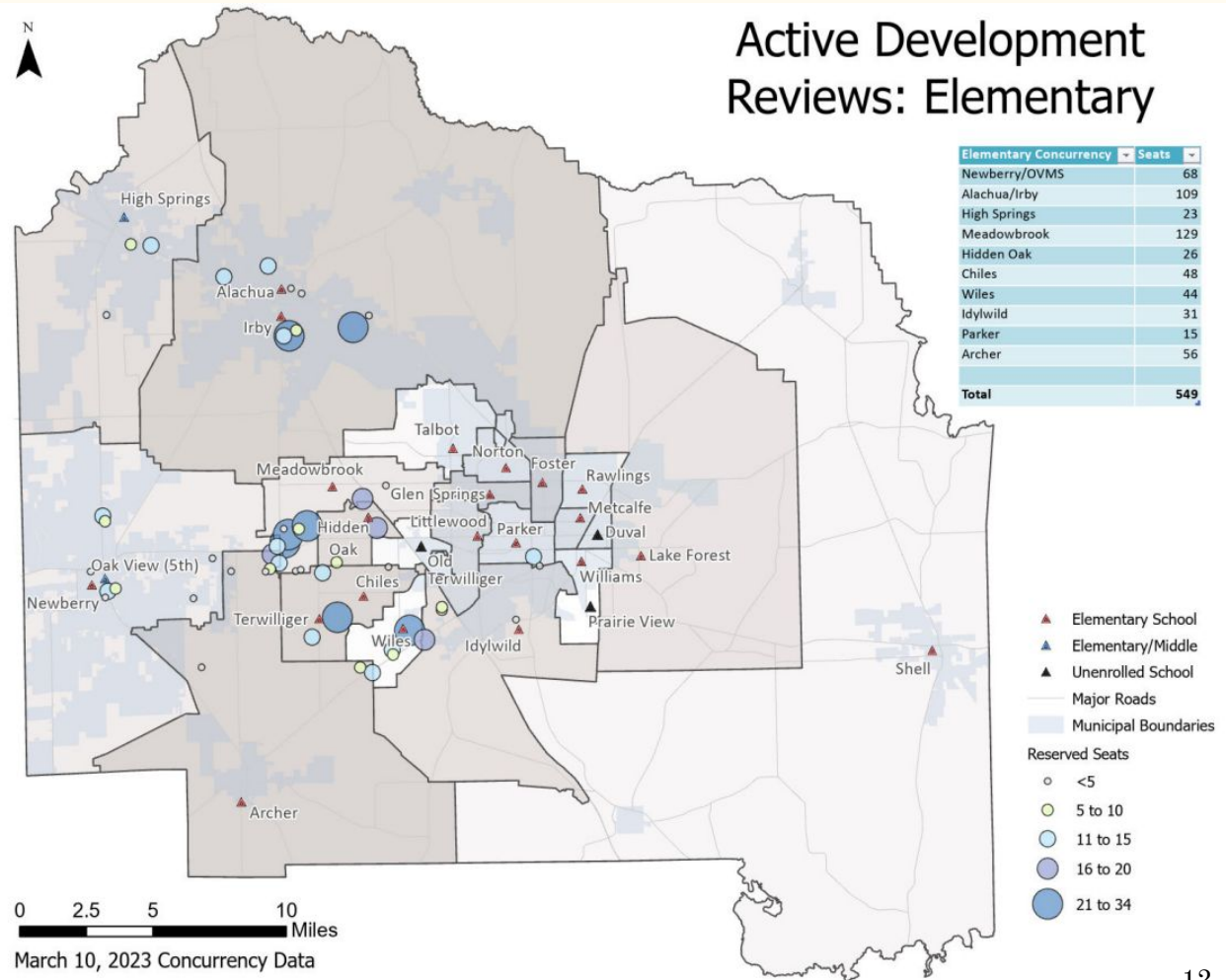


Student Population Maps: High



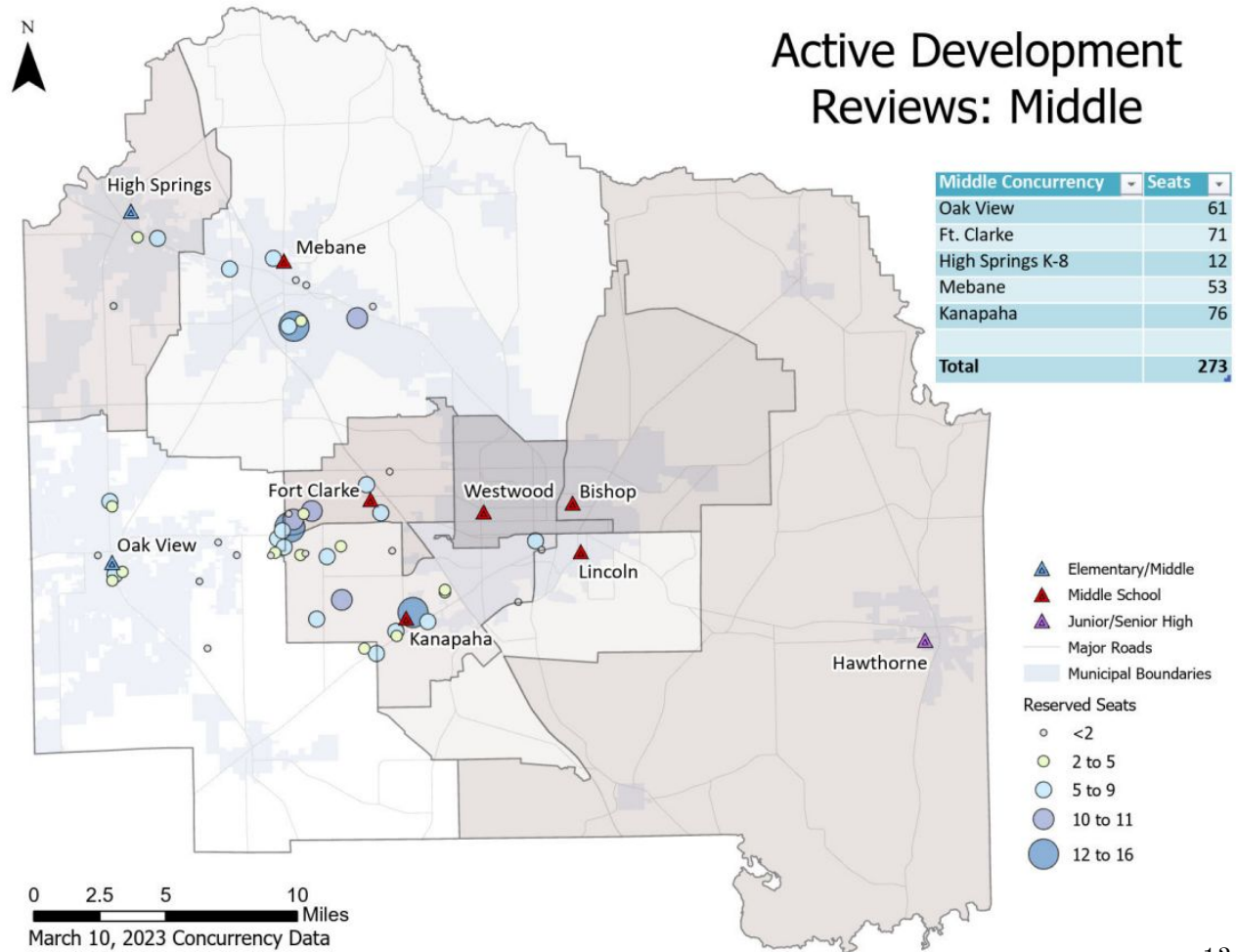
Active Development Maps: Elementary

Active Development Reviews: Elementary



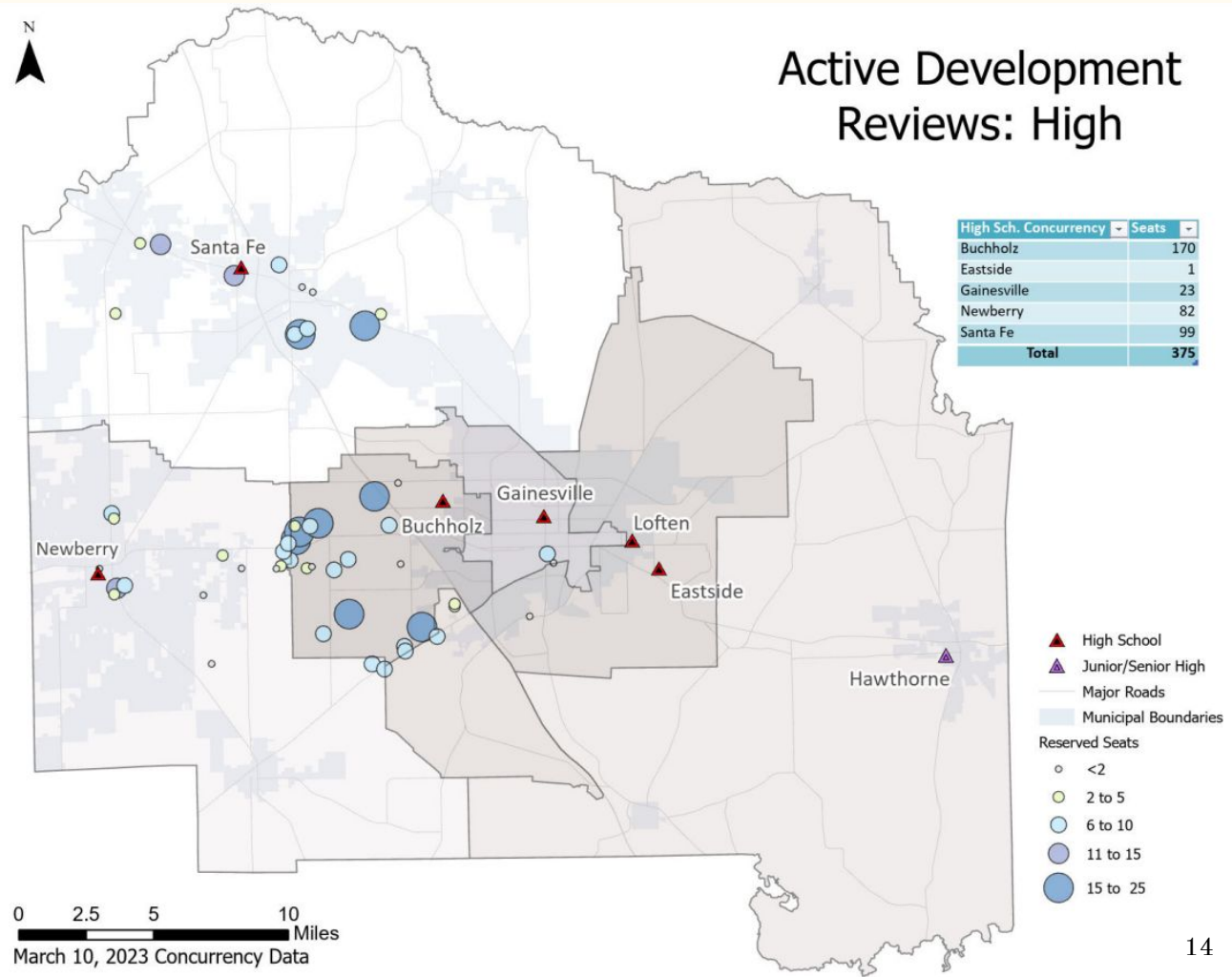
Active Development Maps: Middle

Active Development Reviews: Middle



Active Development Maps: High

Active Development Reviews: High



Active Development: Elementary/Middle/High Student #s

Elementary Concurrency	Seats
Newberry/OVMS	68
Alachua/Irby	109
High Springs	23
Meadowbrook	129
Hidden Oak	26
Chiles	48
Wiles	44
Idylwild	31
Parker	15
Archer	56
Total	549

Middle Concurrency	Seats
Oak View	61
Ft. Clarke	71
High Springs K-8	12
Mebane	53
Kanapaha	76
Total	273

High Sch. Concurrency	Seats
Buchholz	170
Eastside	1
Gainesville	23
Newberry	82
Santa Fe	99
Total	375

Policy 5120–District School Zones

Modifications may be appropriate following construction of a new school, construction of additional facilities at an existing school, closing or suspension of operations of an existing school, over or under school capacity of a school, and the growth or decline of a student population. Changes may be justified after consideration by the Board of the following:

- **financial and administrative efficiency**
- **school capacity and grade level capacity**
- **convenience of access to schools**
- **safe and efficient student transportation and travel**
- **effective and appropriate instructional programs**
- **social-economic diversity in school enrollments with consideration of the equitable impact on student enrollment at each school**
- **utilization of existing school facilities**

Seeking Board Direction

What considerations need to be taken into account?

- Moving School-Based Programs
- Transportation
- Neighborhood Schools
- Diversity
- Combining Schools
- 5th Grade/Sibling Grandfathering
- Zoned vs. Enrolled students
- Title 1 Impacts
- ESOL Centers
- IEP Accommodations

2-Mile Walking Zone Maps Example: Middle

